

medical

V Series Veterinary Endoscope

The portable and affordable endoscope.

The Yateks V Series veterinary endoscope is a fully featured and highly portable instrument, using the latest technology to produce high-quality endoscopic images.

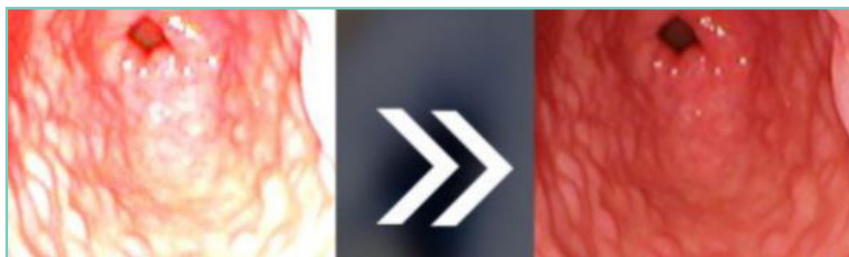
Specifically designed for use with small animals, having this endoscope in your practice will allow for less referrals (via in-house diagnoses), less stress and discomfort for patients when compared with surgical procedures, decreased anaesthetic time, faster recovery times and more efficient patient management – great for the animal, the owner and the veterinarian.



V Series Veterinary Endoscope



More detail in images due to high-resolution sensor with 120° angle of view.



One key extinction allows for adjustment of exposure degree and time to counterbalance the effects of the LED light source in the intestinal or respiratory tract.

This portable, low-cost endoscope has a two-way-articulating insertion tube, providing an unobstructed 180° view inside the patient. It also has a working channel and forceps which allow for the removal of foreign objects from the animal's body, as well as internal examination and biopsy – quite often removing the need for surgical procedures.

The V Series comes with several image enhancement functions, as well as image zoom, freeze and mirror. It has multi-setting LED illumination and is equipped with a 4" adjustable viewing screen (horizontal 180°, vertical 120° and bidirectional rotation), that can be connected to an external monitor. Additionally, the V Series comes with a range of optional diameter probes, making it suitable for all patient sizes. Its portability is ideal for clinics, animal hospitals and field work.

Features & benefits:

- 180° two-way bending insertion tube
- Negative pressure suction function
- One key extinction – image enhancement with just one click
- One key white balance – detects and adjust deviations in color temperature
- RGB adjustment – allows for manual adjustment of color temperature
- Adjustable IPS touch screen

Specifications

Camera head / probe outer diameter	Working channel inner diameter
2.8mm	No working channel
3.8mm	1.2mm
4.8mm	2.2mm
5.8mm	2.6mm
Insertion length	600mm
Functions	Photos, videos, playback
Camera head articulation	Up 180° / Down 180°
Display screen	10.1cm with 480*480 resolution
Depth of field	5-80mm
Image control	Image freeze
	One key extinction
	One key white balance
	Image color adjustment
	Image scaling
	Brightness adjustment
Memory	32GB TF card
Video out	HDMI
USB Output	USB 2.0
Battery	Rechargeable, 4 hours continuous
Foreign body forceps (via working channel)	1050mm
Biopsy forceps (via working channel)	1200mm

yateks[®]

ISO 9001 Quality Certified

For further information and a demonstration, contact **Inline** at info@inline.com.au

1300 033 733

inline.com.au

Inline
IMAGING TECHNOLOGY